



Climate change related diseases

Dr. Mo Mo Kyaw Min
Assistant Director
Central Epidemiology Unit
(23.12.2019)



Climate change and Diseases

- The burden of disease attributable to climate change has recently been estimated by World Health Organization.
- To compare the attributable burdens for disparate risk factors we need to know (3) factors.

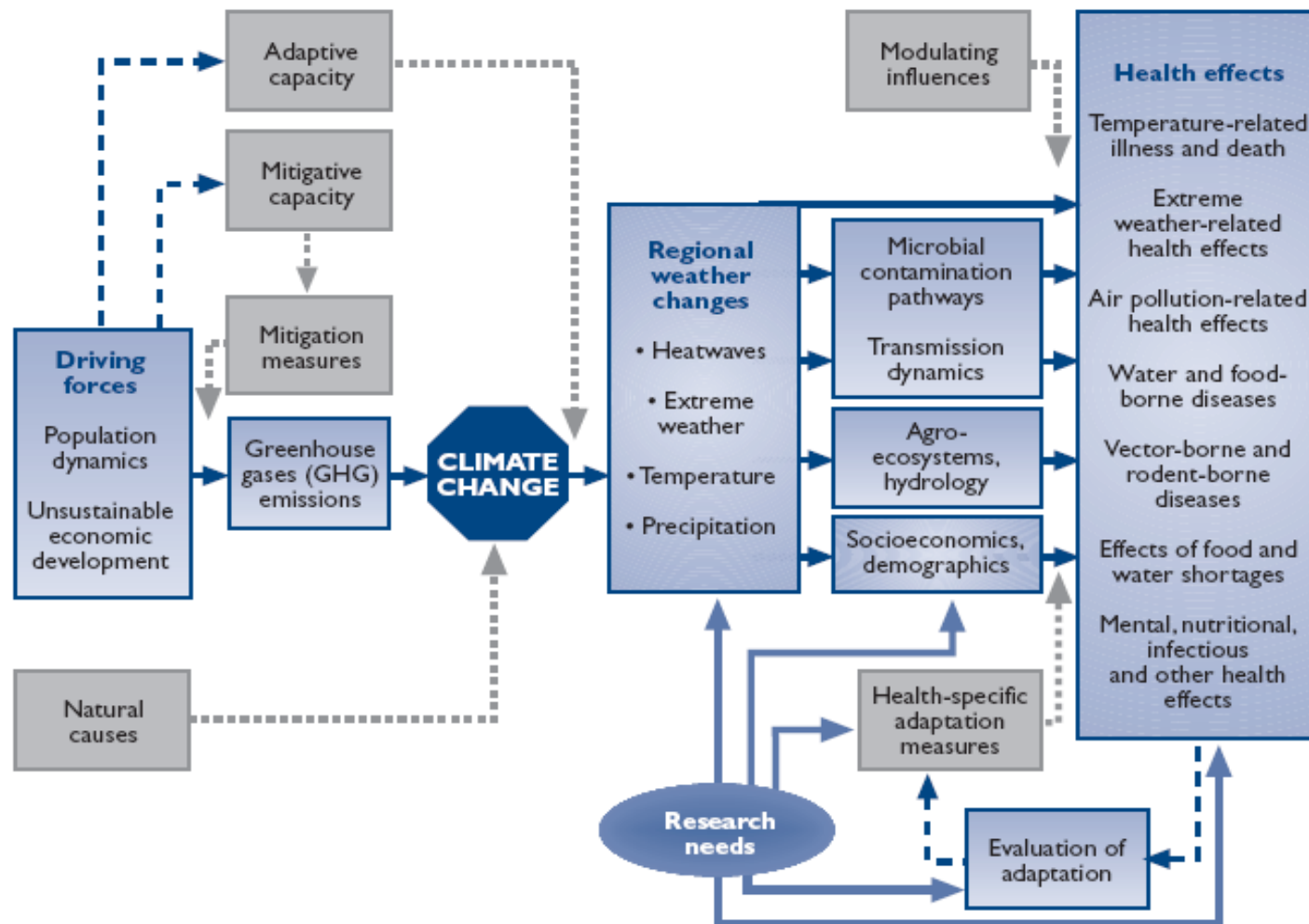


Climate change and Diseases

- a. the baseline frequency of disease, absent the particular risk factor,
- b. the estimated increase in risk of disease/death per unit increase in risk factor exposure (the “relative risk”)
- c. the current or estimated future population distribution of exposure



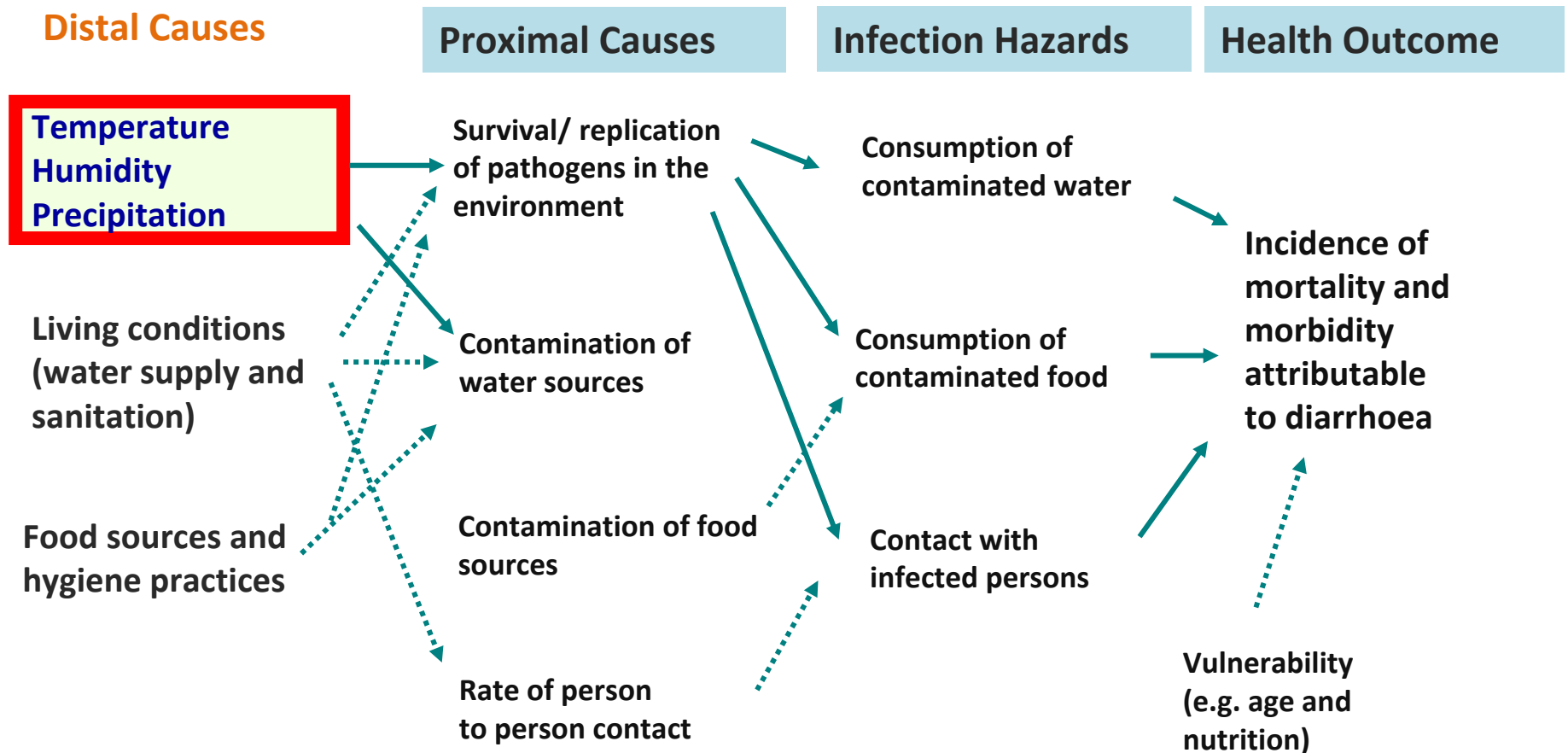
Pathways from Driving Forces to Potential Health Impacts





Pathways for Weather to Affect Health

Example ; Diarrheal Disease



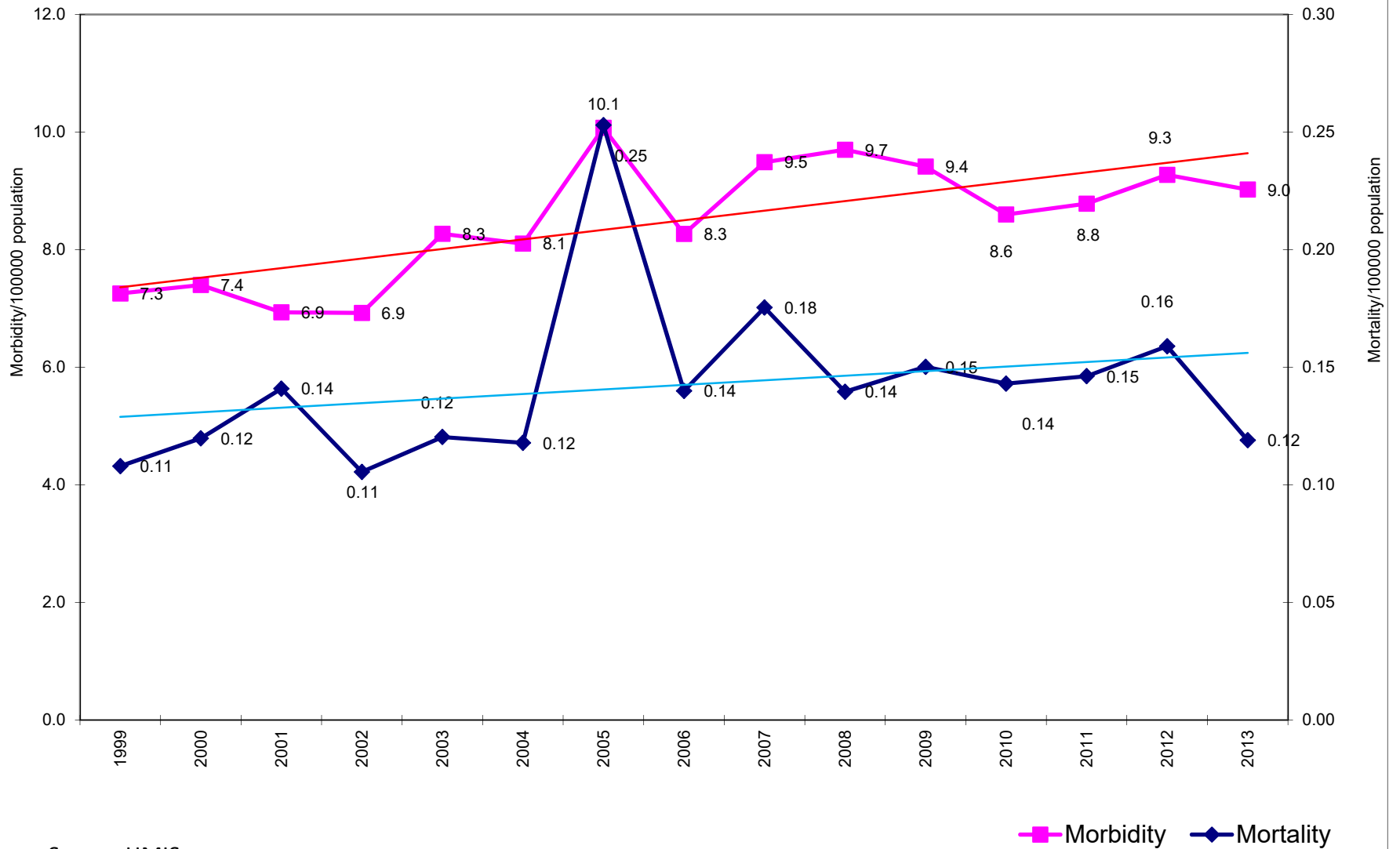


Questions to be Addressed

- What climate-sensitive diseases are important in the country or region?
- What is the current burden of these diseases?
- What factors other than climate should be considered?
e.g., Water, sanitation, etc.
- Where are data available?
- Are health services able to satisfy current demands?



Morbidity and Mortality Trend of Food Poison in Myanmar (1999 to 2013)



Source-HMIS

23/12/2019

Central Epidemiology Unit



Reported Food Poisoning Outbreak events (from 2010 to 2019 as of November)

