



Achievements and Updates on Multi-sectoral National Plan of Action on Nutrition (MS-NPAN)

Third Meeting of Nutrition Promotion Steering Committee

Dr. Lwin Mar Hlaing

M.B.,B.S, MPH, PhD (Nutrition)

Deputy Director (National Nutrition Centre)

Outline

- ❑ Background on MS-NPAN
- ❑ Update since second meeting of Nutrition Promotion Steering Committee (NPSC)
 - ❖ Key achievements and challenges
 - ❖ MS-NPAN aligned as a response to COVID-19 challenges
 - ❖ Update on Monitoring and Evaluation of MS-NPAN
 - ❖ Update on MS-NPAN Costing
- ❑ Next steps



အမျိုးသားအာဟာရဆိုင်ရာ မဟာဗျူဟာနှင့်ပတ်သက်သည့် ဝန်ကြီးဌာနများအကြား
ပူးပေါင်းဆောင်ရွက်ရေး အစည်းအဝေး

Cross -Ministry coordination meeting on national nutrition strategy

၂၅.၁.၂၀၁၇

ဝဏ္ဏမိုး



Multi-sectoral National Plan of Action on Nutrition (MS-NPAN)

- ❖ Collaborative effort among concerned ministries, UN and development partners
- ❖ Finalized in July 2018
- ❖ Submitted to DACU in Aug 2018
- ❖ **Goal:** To reduce all forms of malnutrition in mothers, children and adolescent girls





Key achievements after First meeting of Nutrition Promotion Steering Committee



MS-NPAN is endorsed by concerned ministries



**Resources mobilized for Inception year of the MS-NPAN
(Establishment of coordination structures and planning)**



Key achievements since Second meeting of Nutrition Promotion Steering Committee



Planning tools and Guidelines

(Planning & prioritization, Capacity assessment and M&E) developed and approved



Sub-national planning workshops

conducted in selected states/regions (Ayeyarwaddy, Kayah, Chin, Kayin, and Southern Shan)



MS-NPAN State/Region Plans

developed and available in (Ayeyarwady, Kayah, Chin, Kayin, Southern Shan)



Two advocacy meetings with MPs

(Feb and Aug 2020)
Members of Parliament committed for support (Integration of S/R MS-NPAN into national and sub-national development plans & budgets)

Nov 2019, Kayah



Dec 2019, Kayin



Dec 2019, Chin



Jan 2020, Shan(South)



State/Region MS-NPANS developed for Ayeyarwaddy, Kayah, Chin, Kayin & Shan (South)



Sub-national planning workshops (Ayeyarwady, Kayah, Chin, Kayin, and Southern Shan)



July 2019, Ayeyarwaddy



Dec 2019, Kayin



Jan 2020, Shan(South)



Nov 2019, Kayah



Dec 2019, Chin



Aug 2020



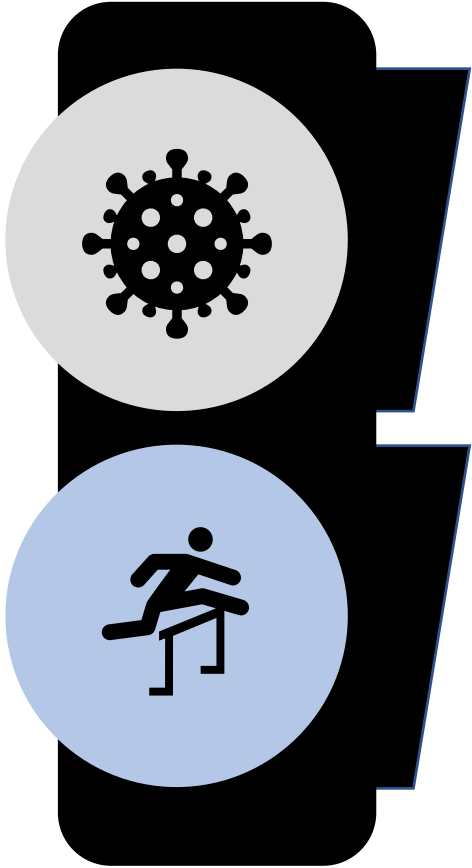
Updates on MS-NPAN & Advocacy for integrating MS-NPAN implementation into sub-national plans and budget

Mobilizing political and financial support at sub-national level

Feb 2020



Challenges and Needs



IMPACT OF COVID-19

- ❖ While processes were well underway, the COVID-19 crisis hit Myanmar in March 2020 and activities have since slowed

Other Challenges

- ❖ Linking Mechanisms among sectoral activities
- ❖ Commitment and Leadership at sub-national level to strengthen
- ❖ Coordination at all levels
- ❖ Accountability, Responsibility and sense of ownership



**Leveraging the
existing
MS-NPAN to
respond COVID-19**

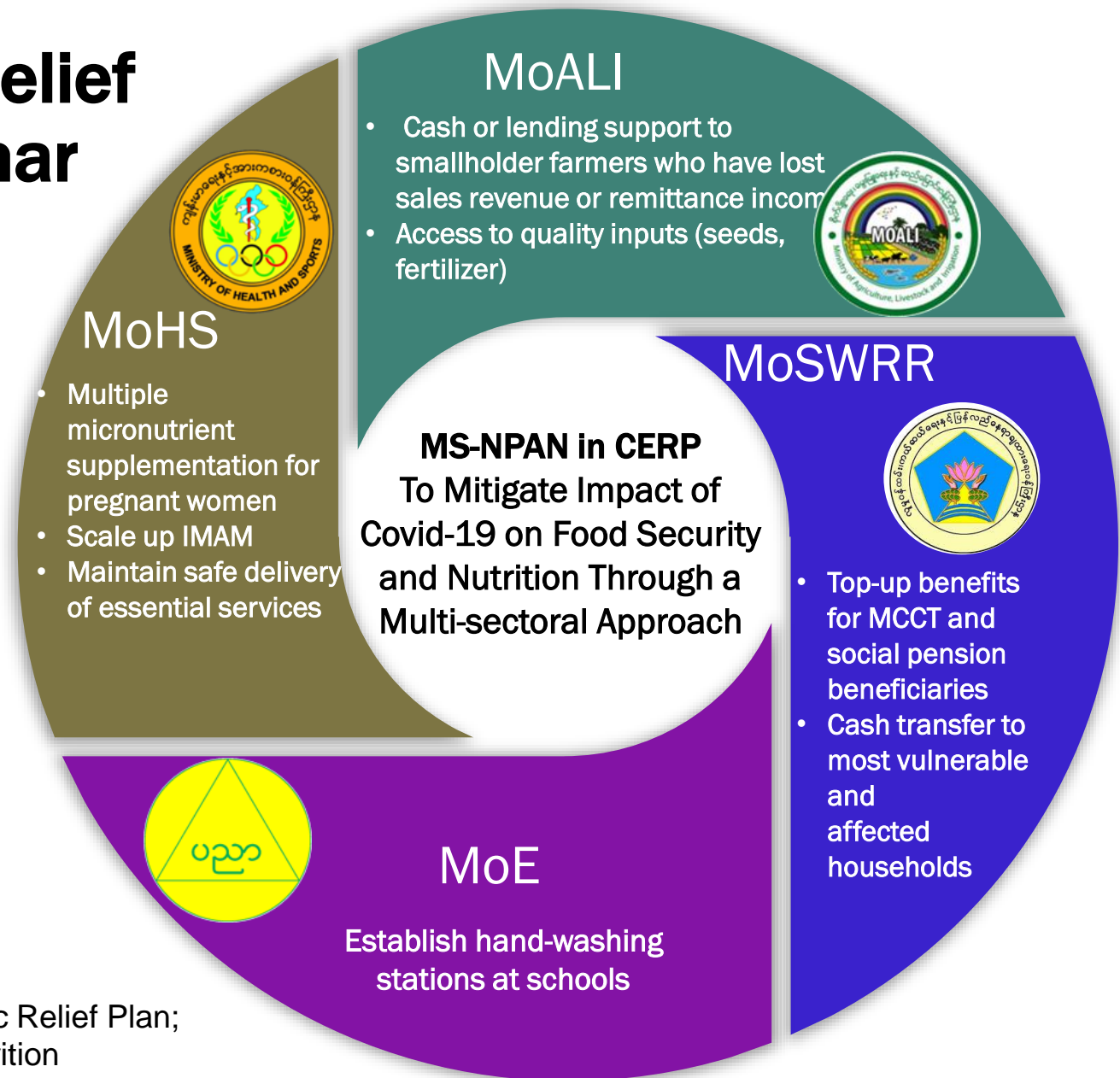
**Potential Contributions of MS-NPAN in
COVID -19 Response**

- ☐ COVID -19 response also requires **multi-sectoral approach**
- ☐ MS-NPAN is an **effective delivery platform and mechanism for response** to prevent food insecurity and adverse nutritional impacts of COVID-19
- ☐ MS-NPAN prioritizes **main risk factors, vulnerable communities and geographic areas** which are likely to be affected by COVID-19



COVID-19 Economic Relief Plan (CERP), Myanmar

CERP is a plan/platform that aligns the contributions of different sectors with a specific focus on incentivizing investment by the private sector



Reference: (1) Myanmar Government's COVID-19 Economic Relief Plan;
(2) Multi-sectoral National Plan of Action on Nutrition

Initiating Implementation (MS-NPAN to adapt to COVID-19 Context)



CONSULTATIVE DISCUSSION WITH UNION SECTORAL FOCAL

- Multisectoral Online Meetings on Planning conducted
- **Tools for adapting** sub-national plan in the context COVID-19 developed and Sectoral plans aligned



CONSULTATIVE DISCUSSION WITH STATE/REGION FOCAL

- To adapt current MS-NPAN scale up plans including targets in the context of COVID-19
- To **identify Resource gaps** for implementation



RESOURCE MOBILIZATION

- **Government** Budget
- **External** Donors



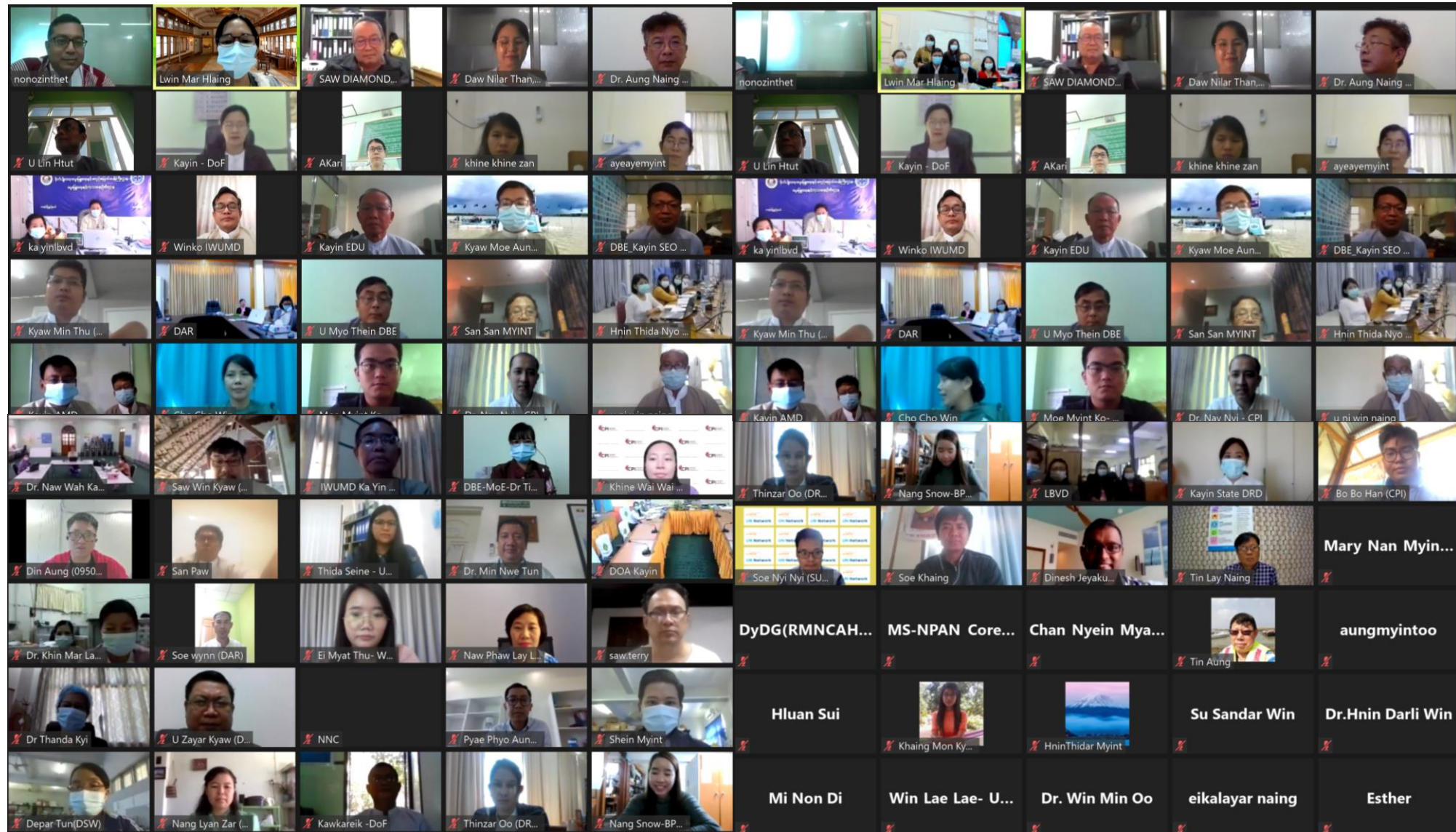
INITIATING IMPLEMENTATION

- **Support the State/Region Nutrition Promotion Committees** to operationalize the costed plans

Virtual consultative meetings with Union level Focal persons



Virtual consultation with Kayin state Focal persons





Update on Monitoring and Evaluation for MS-NPAN

Update on M & E for MS-NPAN

- ❑ MS-NPAN M&E Guidelines & Tools developed
- ❑ Landscaping review conducted
- ❑ 1st Multisectoral consultative meeting on M&E conducted: Consensus sought on M&E framework
- ❑ Bilateral M&E meetings with sector focal (finalizing): Sectors' indicators and data sources verified
- ❑ Will focus on “**minimum essential data**”
- ❑ Snapshot on progress, coordination & convergence
- ❑ Multi-sectoral collaboration of joint activities for synergy of outputs
- ❑ Evidences for programmatic/budgetary decisions



Improved Dietary Diversity



- ✓ Awareness of dietary diversity
- ✓ Micronutrient supplementation,



- ✓ Education on nutrition & healthy lifestyle
- ✓ School meal programme



- ✓ MCCT, Nutrition support to pre-schoolers



- ✓ Homestead-based food production, Village revolving funds

Increased IYCF Practice



- ✓ Violations of the BMS code
- ✓ Good knowledge on breastfeeding, Complementary feeding and other IYCF practices
- ✓ Increased capacity of families to improve IYCF practices,
- ✓ Increased diversity of food products produced (vitamin A and iron-rich vegetables, fruits, fish, livestock, and other animal-based foods)



Improved hygiene, sanitation and access to safe water



- ✓ Access to safe water and sanitary latrines and utilization
- ✓ Adoption of safe hygiene practices



- ✓ Use of safe water, sanitation, and proper hygiene among students at primary and secondary schools



- ✓ Access to improved water supply

Improved safe and nutritious foods



- ✓ Compliance of the National food laws and regulations



- ✓ Awareness of good practices for health, nutrition, and hygiene



- ✓ Compliance with safety standards at household level and at market level

To reduce all forms of malnutrition in mothers, children and adolescent girls



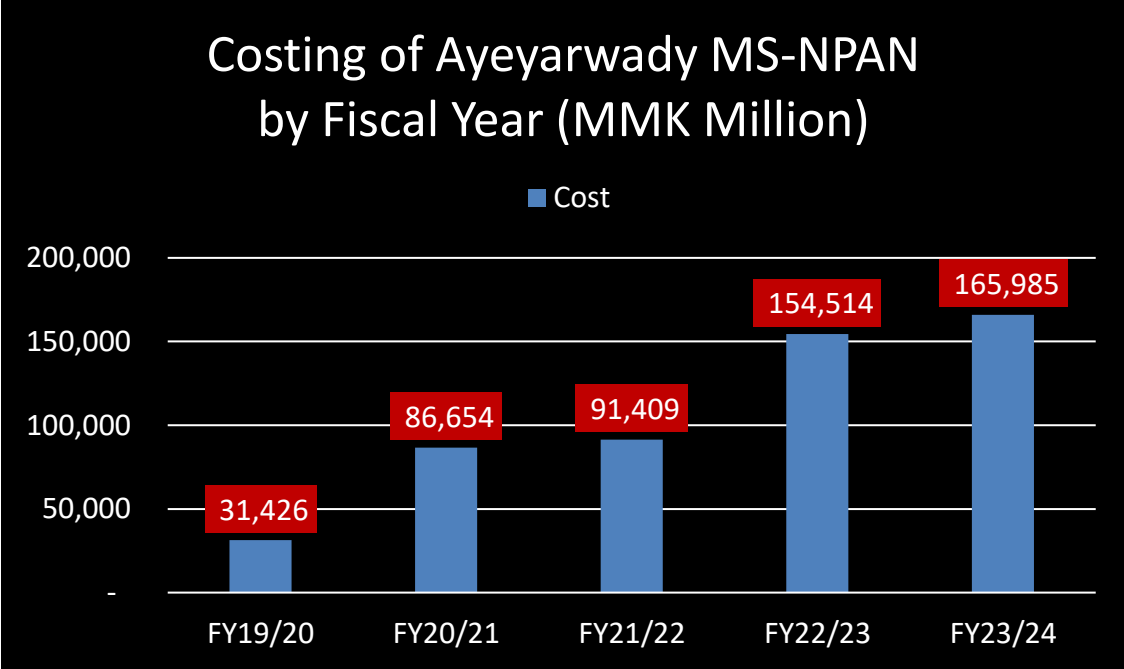
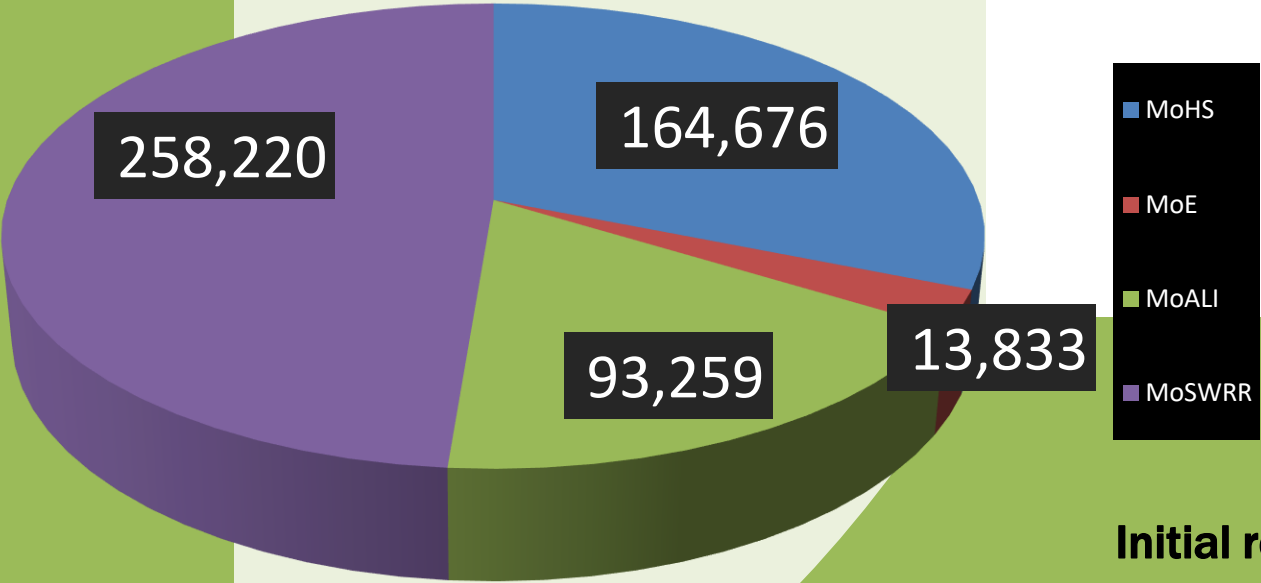
- ❖ **Evidences** generated from M&E system will be summarized and presented as a **dashboard** for **high-level programmatic and financial decisions**.



Updates on MS-NPAN costing

MS-NPAN costing

- Completed draft costing for sub-national MS-NPAN for Ayeyarwady, Chin, Kayin, Kayah, Shan-South



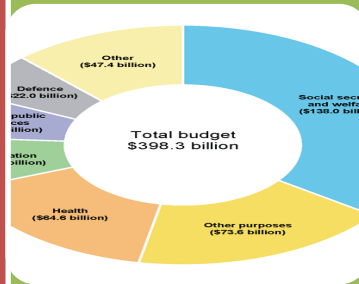
Initial results on MS-NPAN costing for Ayeyarwady region

Nutrition Budget Analysis



Estimate Funding Gaps

- Compare budget to cost information from the MS-NPAN



Produce a Budget Brief

- For Assembly of the Union Ministries, CSOs, advocates, and other stakeholders



Avail the Government's contribution on Nutrition

- Allows for better participation with SUN movement and SUN countries

Next Steps



1. Continue Plan development for remaining states/regions

- ❖ Develop costed plans for Rakhine, Kachin, Shan(North & East), Mon, Magway, and remaining regions
- ❖ Costing for sub-national MS-NPAN plans



2. Implementation at sub-national level

- ❖ Adapt state/region plans to incorporate responses to Impact of COVID-19 on Nutrition and Food Security (Ayeyarwady, Kayah, Chin, Kayin, Shan South)
- ❖ Initiate implementation of the plans in (Kayin, Ayeyarwady, Kayah, Chin, and Shan south)



3. Strengthen coordination mechanisms, monitoring and reporting at the sub-national level

- ❖ Support function of State/Region Nutrition Promotion Committee and State and Region focal teams to operationalize the costed and prioritized action plans
- ❖ Establishment of M&E system for MS-NPAN



လမ်းညွှန်မှုနာခံအပ်ပါသည်။