

EDUCATION SECTOR PLANS/ ACTIVITIES RELEVANT TO MS-NPAN

Department of Basic Education
Ministry of Education

17 December 2020

Objectives

- To promote the knowledge of nutrition in schools and healthy lifestyle in schoolchildren
- To promote sympathy and sharing attitudes and practices in children
- To increase school enrolment, attendance and retention rates and reduce drop out rate
- To transfer nutritional knowledge and message from the students to the parents by means community outreach
- To actively participate in the teaching learning activities

Activities relevant to MS-NPAN

School Feeding Programs

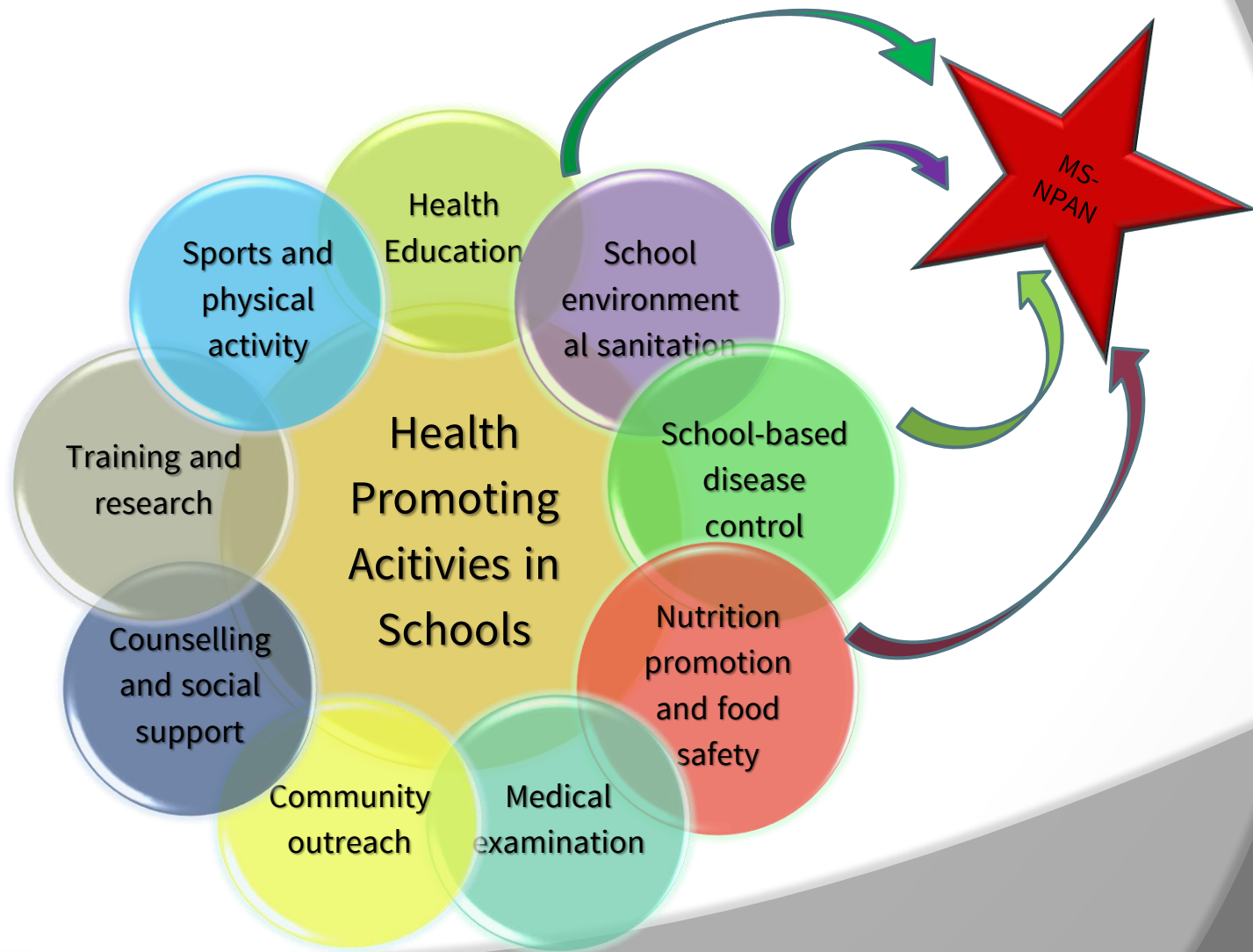
- (2020-2021) Academic Year
Tongzan, Putao, Kaung Lan Phu (3 Townships)
- 76.40Million
- (2021-2022) Academic Year
(115)IAQE Townships (Inclusive Access and Quality Education Programme)
(Estimate Cost - 31286.36 Millions)

Activities relevant to MS-NPAN

- MS-NPAN State & Region Workshops -Ayeyarwaddy, Kayah, Chin, Kayin, Shan-S(Taunggyi)
- Review the State & Region Plan -Kayin (Virtual Online Meeting)
- Providing a focal point from each State & Region for Budget financial statement
- Providing materials/ construct infrastructure and behaviour change communication for handwashing and improved sanitation to 47,514 Schools (High, Middle, Primary)Schools supported by **Myanmar Government COVID-19 Economic Relief Plan (CERP)**
- (Hand-washing Stations, Toilets, Waste Bin, Hand Sanitizers, Ethyl Alcohol, Sodium Hydrochloride, PPE)

Activities relevant to MS-NPAN

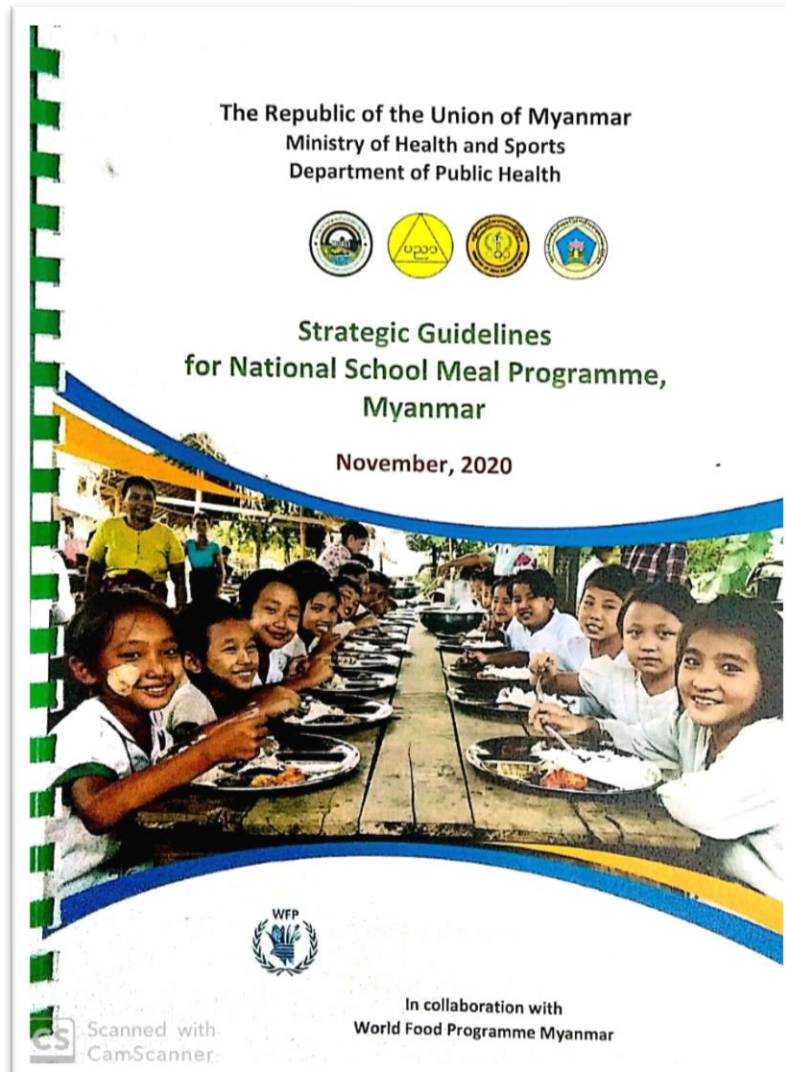
Health Promoting Activities in Schools



Activities coordinated with WFP(2019-2020)

States & Regions	Total School for School Meal	Total Student for School Meal
Kachin (5- Townships)	46	3875
Magway(6- Townships)	95	3717
Mon-Kayin (7-Townships)	68	5650
Rakhine (4- Townships)	61	5353
Shan (2- Townships)	23	3100
Sagaing (1- Townships)	2	500
Chin (3- Townships)	28	916
Wa (14- Areas)	116	12030
Total	439	35123

Activities coordinated with WFP(2019-2020)



“Strategic Guidelines of Myanmar National School Meal Program.”
will be launched in collaboration with MoHS, MoE and WFP

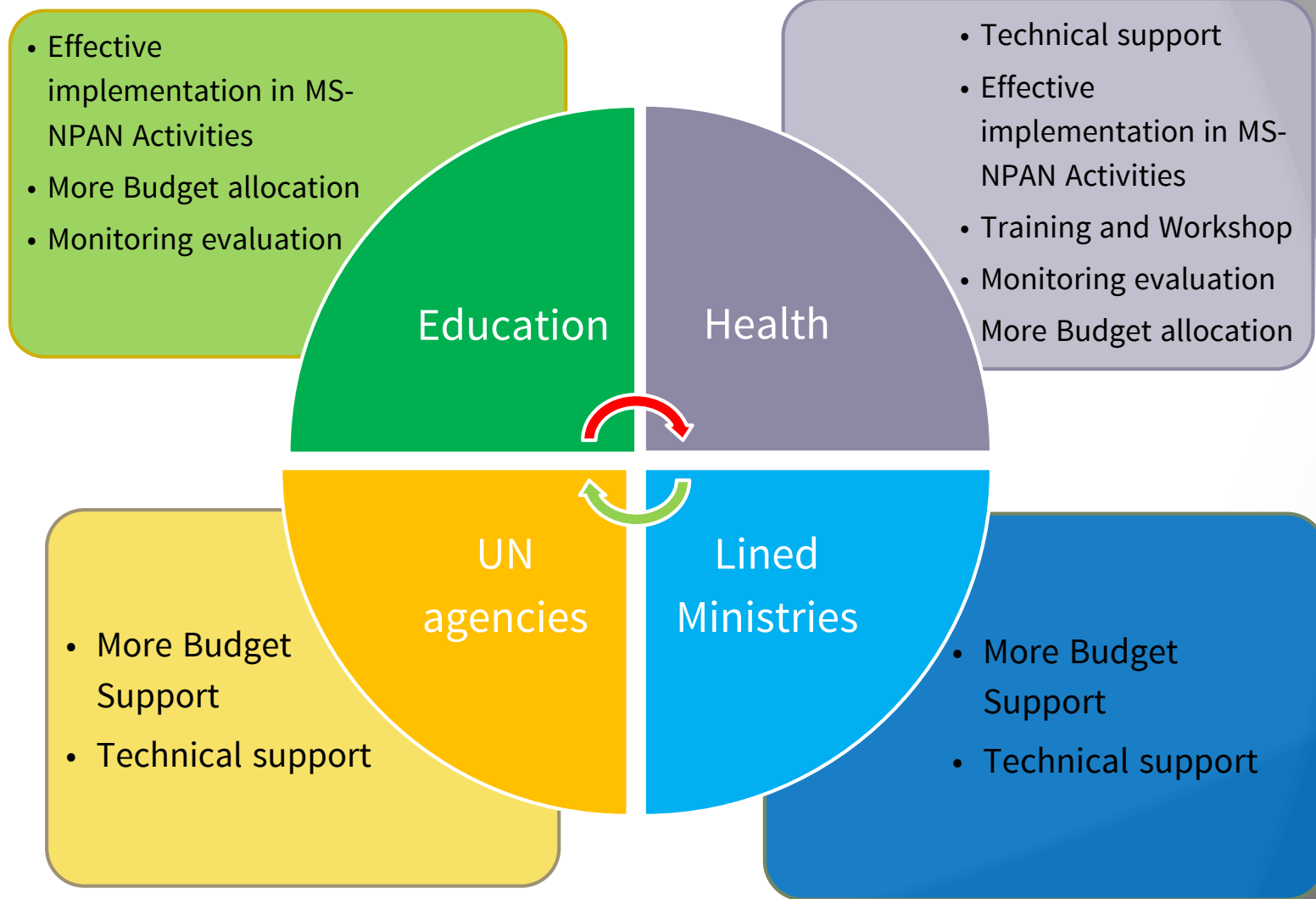
Way Forwards

- ❑ Second National Education Strategic Plan (2021-2030)
 - ❑ Pillar 1: Access
 - ❑ Strategy 2: Component -6 (Promoting access to education and investment in learners through school-based programme aiming to improve health and nutrition of school age children)

Way Forwards

- ❑ Joint Monitoring Process collaboration with Line Ministries and Departments
- ❑ Continue to implement MS-NPAN State/Region Workshops
- ❑ Conduct launching Strategic Guideline of Myanmar National School Meal Programme with WFP's corporate(MOHS, MOALI,MOSWRR)

Way Forwards



A yellow scroll with a black outline, featuring a rolled-up end on the left and a small circular detail on the right. The scroll is set against a white background with a grey curved shape on the right side.

လမ်းညွှန်မှုခံယူပါသည်။